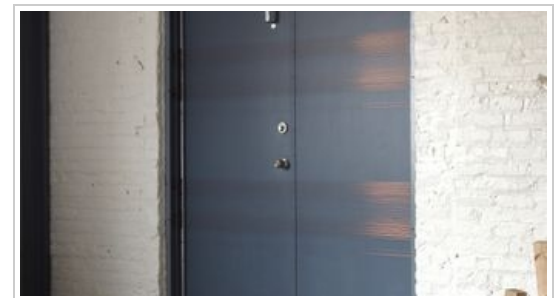


On Big Drawings

2020

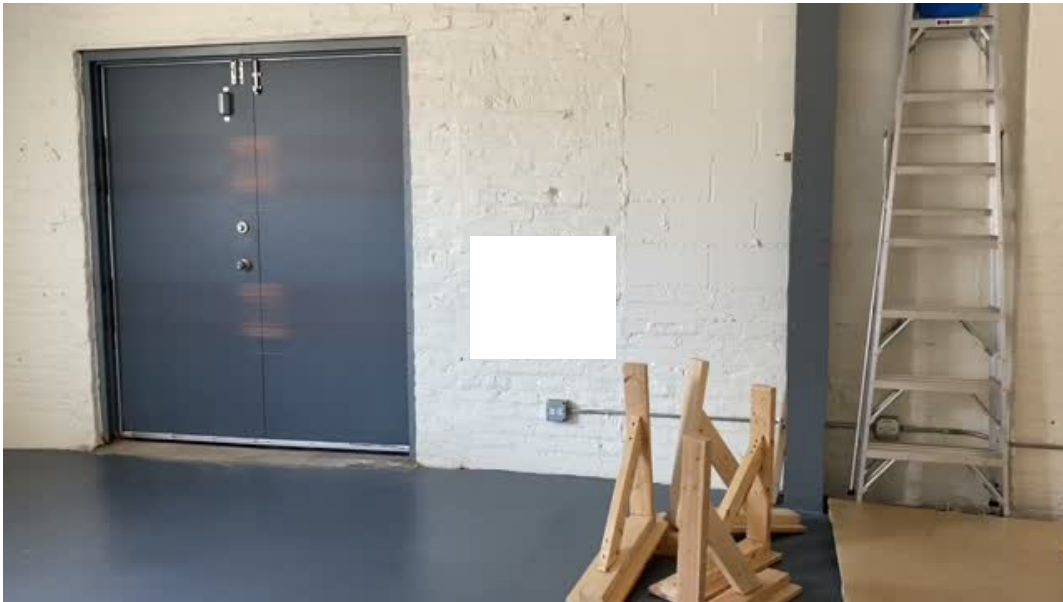
ART AT HOME

Christine Wallers: Sculpture and Installation

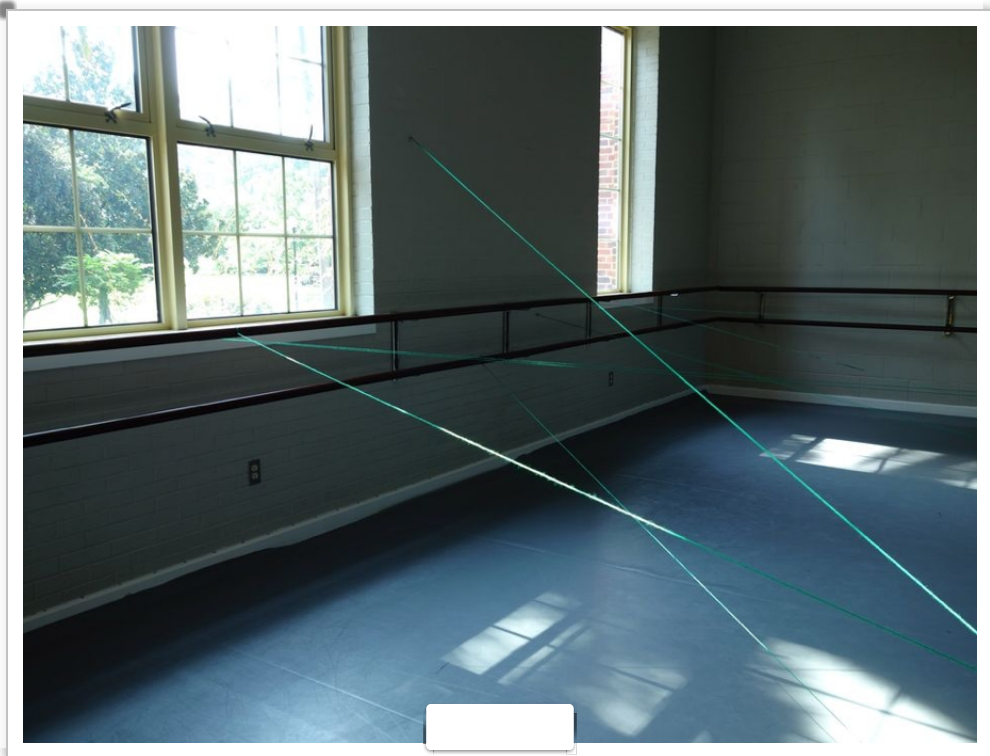
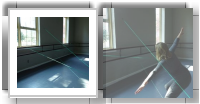


Copper Agnes | 2020

copper wire and magnets

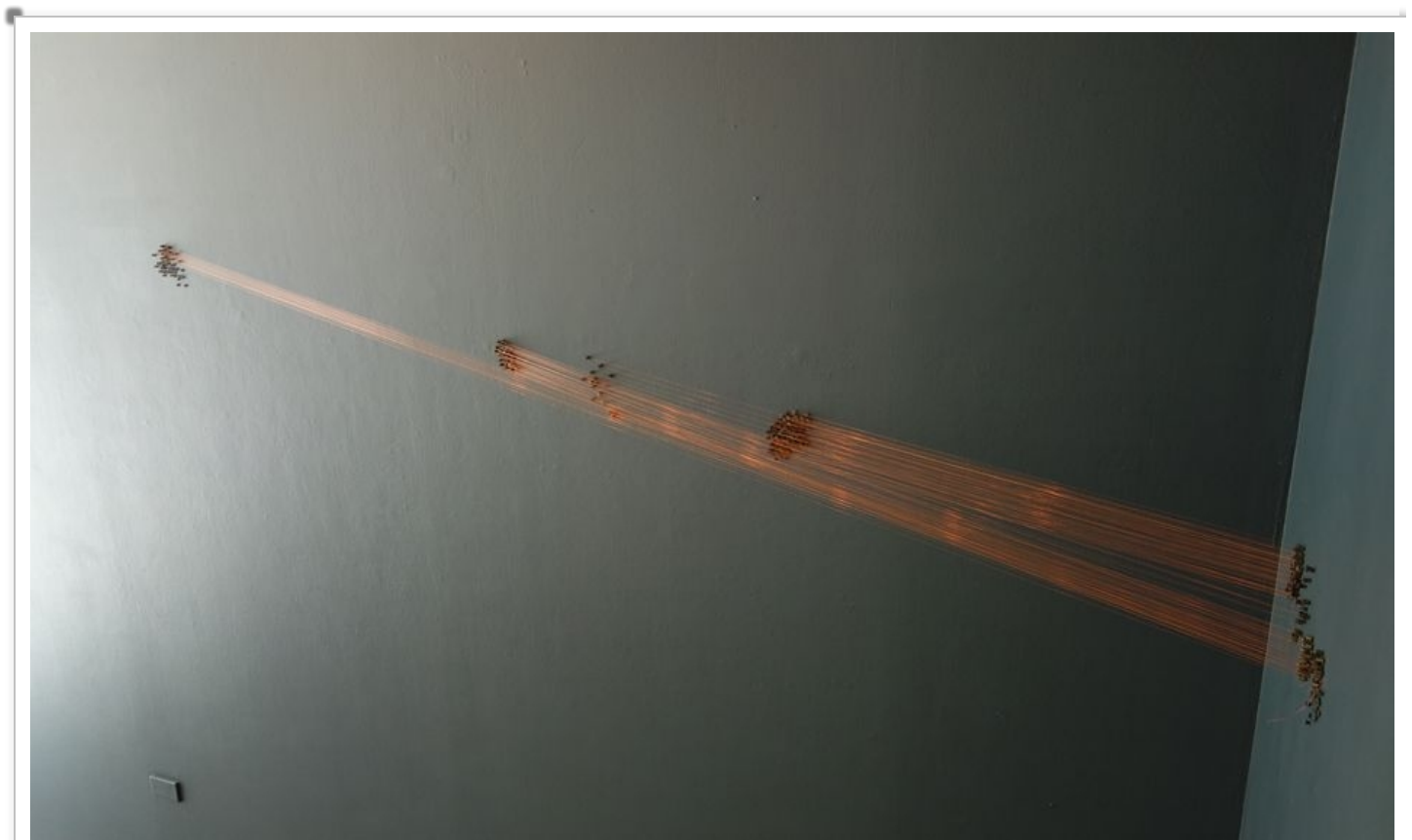


still image outside Taos, New Mexico 2020



(above)
Doing Fine, Installation, MANCC
with choreographer Joanna Furnans

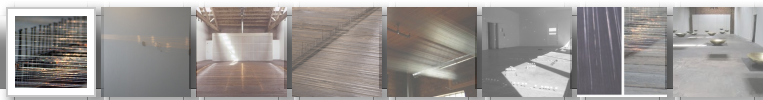
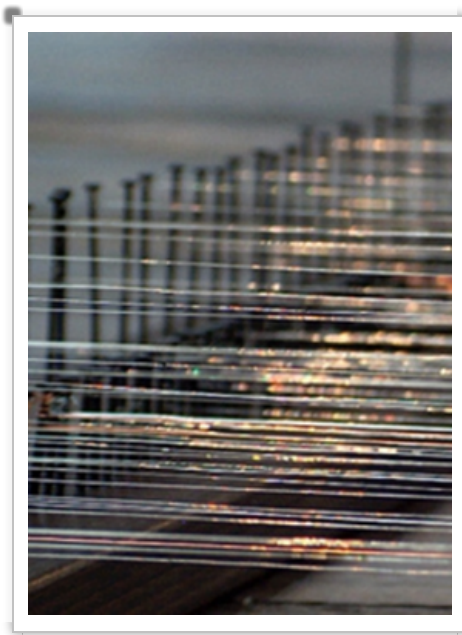
(below)
on the elements of electricity
2014
"On Big Drawings 2014" A + D Gallery, Chicago, IL





Selected site-specific installations and interventions

Sea Level | Alchemy | Red Shift | On The Elements of Electricity



Sea Level, fine gauge wire, 24ft x 17ft x 4", 2005. Suyama Space, Seattle, WA. Christine Wallers received a 2005 GAP to purchase materials for her upcoming installation Sea Level at Suyama Space in Seattle. Her installation will be comprised of thousands of fine-gauge wires stretched parallel to the floor at varying levels to form a three-dimensional plane just above the surface, thereby creating a sense of transition between mass and movement that can be viewed from different angles. "This piece marks a transition from my previous work with more dramatic desert light, to the subtle, jewel-like quality of northwest coastal light," says the artist.

Alchemy, Old San Ysidro Church, Corrales, NM, 2000.

Red Shift (2002)

glass, natural light, bricks, brass, tape, chalk

Locker Plant, Chinati Foundation, Marfa, Texas, 2002

© FK & The Artists, 2020